



CONTACTLESS

FACE RECOGNITION BIOMETRIC ATTENDANCE

with built-in Temperature Reading

Get both **attendance and temperature** readings of your team **without touching** any surface in **one fixed facial** recognition system



 **FACE
RECOGNITION
BIOMETRIC
ATTENDANCE**
with Temperature Recording



Temperature Taking



ISO:27001 Certified



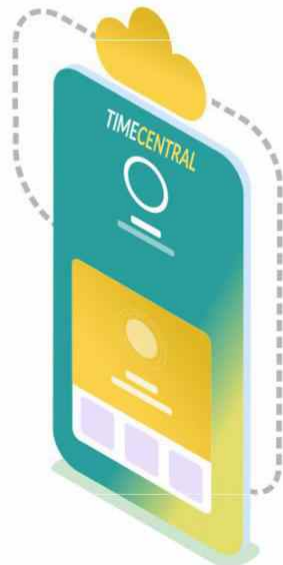
100% Cloud



Multi-Language



Face Recognition attendance



Real-time push to cloud



Multi-Location / Time zone



Instant Reports



Completely Scalable



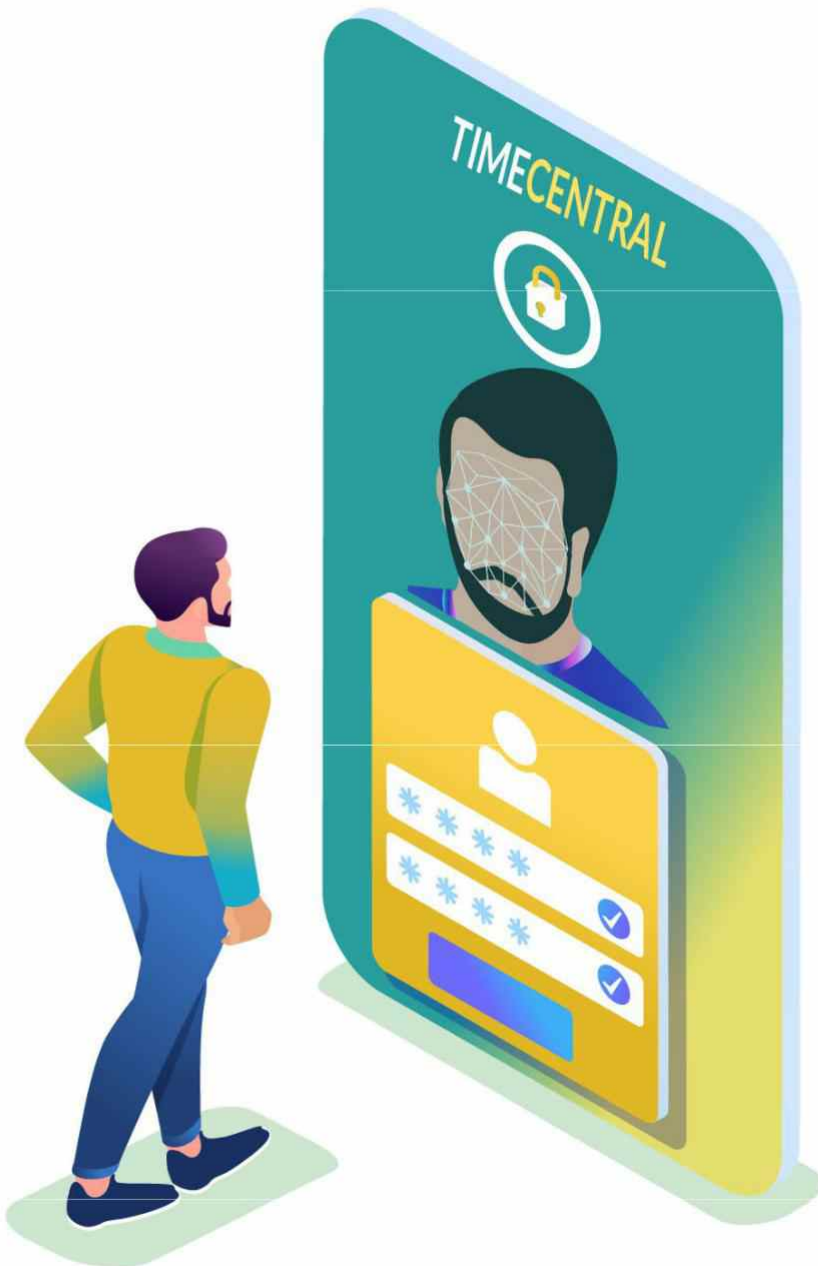
BIOTEMP

Biometric+Temperature

Contactless authentication of attendance with
temperature recording in safest and effective way



Face Recognition



Face Recognition

Facial recognition is the process of identifying or verifying the identity of a person using their face. It captures, analyses and compares patterns based on the person's facial textures and shapes.

8-Inch Dual Camera Face Recognition

Face Capacity: **20,000**

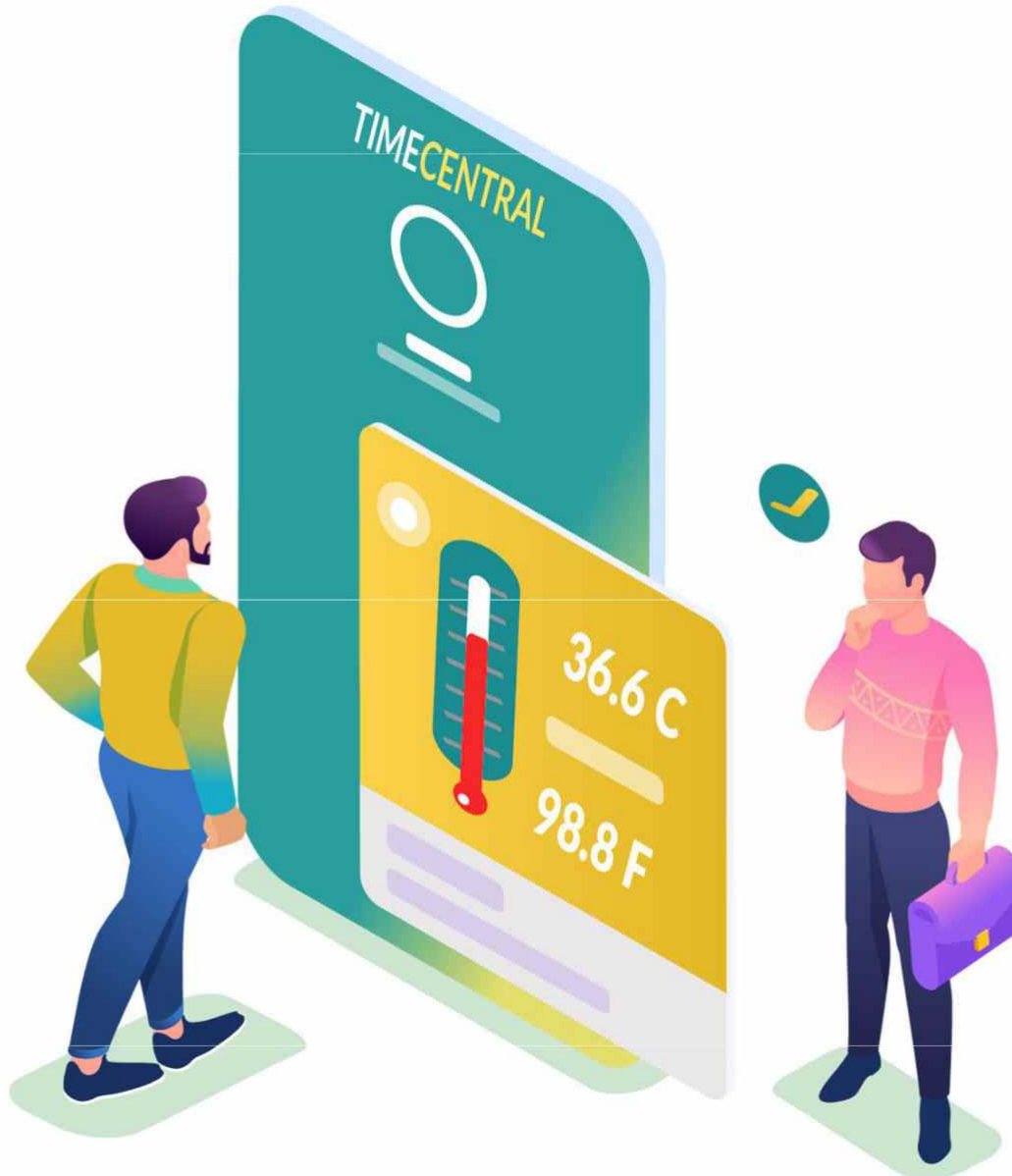
1:N Face Recognition: **99.99%**

Scanning Speed: **< 1 Sec**

1:1 Person Certificate Comparison: **More than 99%**

Special: **Support detecting and tracking 5 people at the same time**

Visitor Temperature Recording



Due to the evolving COVID-19 situation, employers must put in place stringent measures to safeguard the health of their staff and visitor which includes temperature screening, health declaration, and ensuring safe distancing measures are observed at all times.

BIOTEMP has facilitated temperature taking by facial recognition sensors and recording of visitor details without physical contact. This will speed up the whole process faster and reduce physical contact.

All offices who have adopted a temporary solution can now look forward to our automated solution that track visitors with their temperature readings on a daily basis.

Temperature Alert & Alarm

Non-contact measurement of temperature readings of registered users i.e., staff/employees/workers and visitors as well throughout the day.

Modes: **Celsius**

Temperature Measurement range: **25C - 45C**

Thermal Image field: **32x32**

Body temperature alarm value can be set

Enable/disable access based on threshold

Alerts can be configured.

Store temperature records to the database.

Appropriate measures can be carried out to those higher than normal temperature



Realtime push to Cloud



Pushes data real-time to the cloud

Attendance, as well as temperature records, are transferred in real-time, making it easy for tracking and checking at the head office or operation center.

Prompting lateness and overtime reports in real time mode visible to managers by staff location or project.

Multi Time Zones

Works across the globe

Stay connected across the nation or the globe in one integrated system for all your offices, in multiple time zones.

TimeCentral platform unifies various devices to make sure stationed as well as mobile workforce is all covered.

Fixed Face biometric with temperature device + Mobile face recognition (Android & IOS device).



Get daily report via email, or view it on the browser



www.timecentral.co

User	Time Range	Value
[User Icon]	23:10 01:57	36.2
[User Icon]	23:10 01:57	36.2
[User Icon]	23:10 01:57	36.2
[User Icon]	23:10 01:57	39.0
[User Icon]	23:10 01:57	36.2
[User Icon]	23:10 01:57	36.2
[User Icon]	23:10 01:57	36.2
[User Icon]	23:10 01:57	36.2
[User Icon]	23:10 01:57	36.2
[User Icon]	23:10 01:57	36.2

- [Task]
- [Task]
- [Task]



Device General Information

Protection Level: **IP42**, certain dust and waterproof resistance

Power Supply: **DC12V (±10%)**

Operating Temperature: **-10 ° C ~ 60 ° C**

Working Humidity: **10% to 90%**

Power Consumption: **10W MAX**

Installation Method: **Turnstile, Wall mounted, Desktop, Floor Type**

Device Size: **240*120*24 mm**

Dimension: **8 inches screen, full view angle, IPS LCD screen**

Resolution: **1280×800**

Dual Camera: **200W (RGB Camera) ; 130W (Infrared Camera)**

Network Module Support: **wired**

USB Interface: **USB2.0 interfaces**

Security ISO:27001



ISO 27001 certificated

We take pride in our ISO 27001 certification because it confirms the breadth and strength of our security practices and our commitment.

TimeCentral is an ISO:27001 certified platform making sure client's data is safeguarded.

Global Contact

Singapore

2 Kallang Pudding Road
#05-11 Mactech Building
Singapore 349307
+65 6837 2336

Malaysia

8-3, 3rd Floor Wisma KGMB Jalan
Dato Haji Ensoff
Kuala Lumpur 50400
03-87343671 / +60123002349

Philippines

Unit 1605 Medical Plaza Ortigas
Building, 25 San Miguel Ave, Brgy San
Antonio, Pasig City, Metro Manila 1605
+63 9959412322

Thailand

Phahon 19, 2nd floor 1687/1
Phahonyothin Rd, Suite 2073
Bangkok, Thailand 10900
+66(0)84-583-2319

Authorised Partner



D-191, Sector 51
Noida, Uttar Pradesh
India 201301
0120-2482191

Copyright Advanced & Best Technologies Pte Ltd. All Rights Reserved.

A&BGROUP and its respective logos are copyright of Advanced and Best Technologies Pte Ltd in Singapore. All other trademarks and logos belong to their respective owners

60k+ users trust us



Copyright Advanced & Best Technologies Pte Ltd. All Rights Reserved.

A&BGROUP and its respective logos are copyright of Advanced and Best Technologies Pte Ltd in Singapore.

All other trademarks and logos belong to their respective owners.

www.timecentral.co
keepsafe@timecentral.co